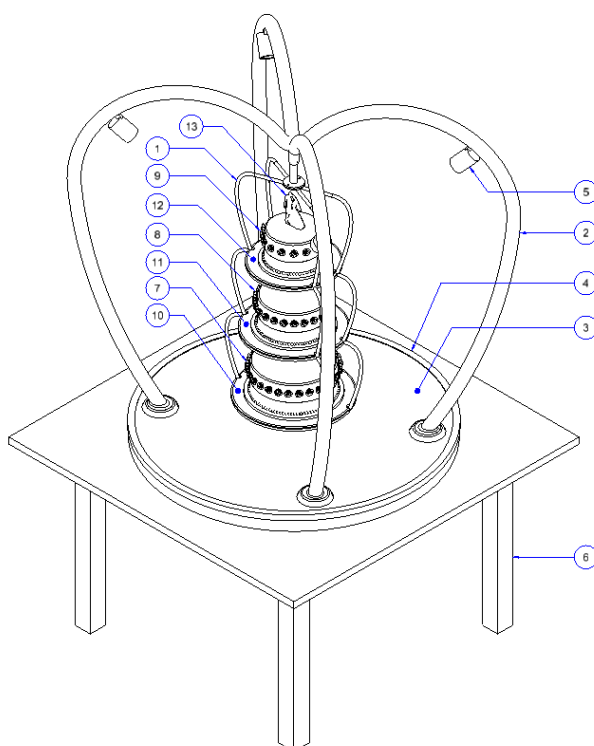
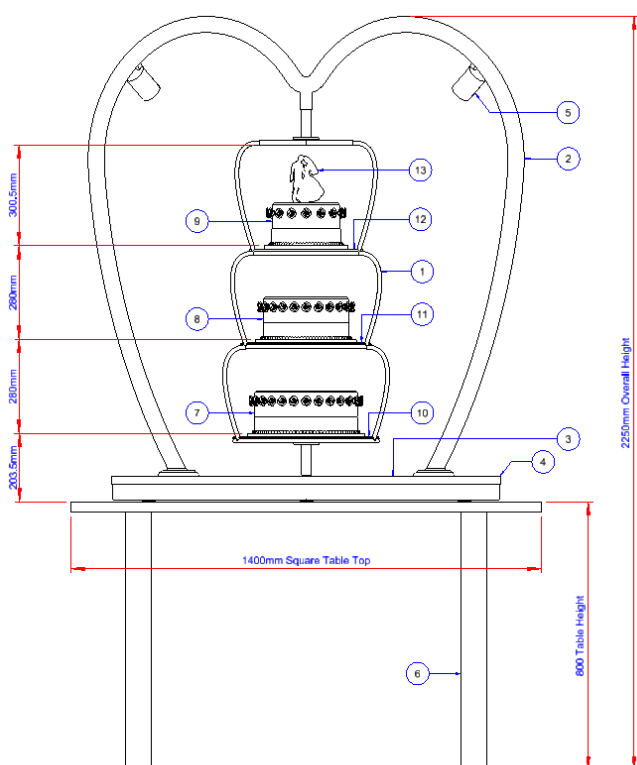


## Top Tier Collection

### Luxury Wedding Cake Display Stands DATA SHEET WCS1083

#### 3 Tier Display Style 2



#### Key

1. Wedding Cake Display Stand (Mirror Polished Stainless Steel)
2. Wedding Cake Display Stand Support Frame (Mirror Polished Stainless Steel)
3. Base Underlayer (see finish options)
4. Base Trim (Polished Brass)
5. LED Spot Lights x4
6. Cloth covered table
7. 12.0" diameter x 5.0" tall cake (recommended size serves 58 portions)
8. 10.0" diameter x 5.0" tall cake (recommended size serves 38 portions)
9. 8.0" diameter x 5.0" tall cake (recommended size serves 24 portions)
10. 17.25" diameter x 6mm thick bevelled glass cake support
11. 15.25" diameter x 6mm thick bevelled glass cake support
12. 13.25" diameter x 6mm thick bevelled glass cake support
13. Bride & Groom Cake Topper

Total of 120 portions

All portion sizes are based upon 1.0" x 2.0" slices

## Top Tier Collection

### Luxury Wedding Cake Display Stands DATA SHEET WCS1083

#### Wedding Cake Stand Base Underlayer Options

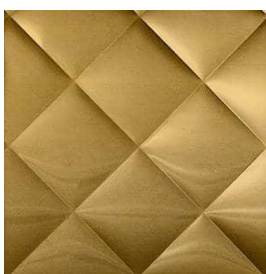
Quilted Bronze



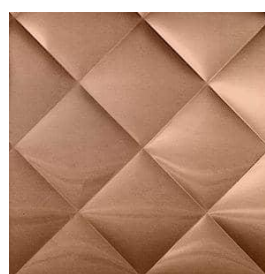
Quilted Champagne



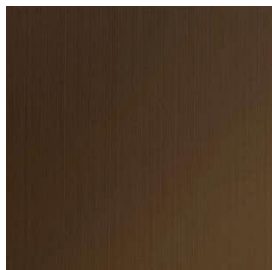
Quilted Gold



Quilted Rosy Gold



Plain Bronze



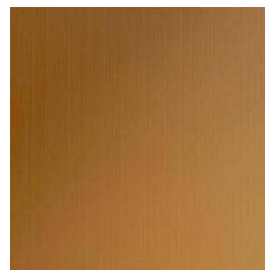
Plain Champagne



Plain Gold



Plain Rosy Gold



*For technical reasons connected with media representations, the colours shown may not be exact matches of the finished product.*

*Top Tier Collection*

Luxury Wedding Cake Display Stands  
DATA SHEET WCS1083

LED Spotlights



- Dimmable GU10 LED bulbs
- 7W 550 Lumen Warm White Colour
- IP20 rated
- Beam Angle 38 Degrees
- Voltage 220-240V
- Stainless Steel housing
- Normal working temperature range -20 to 45 degrees C
- Remote Controller