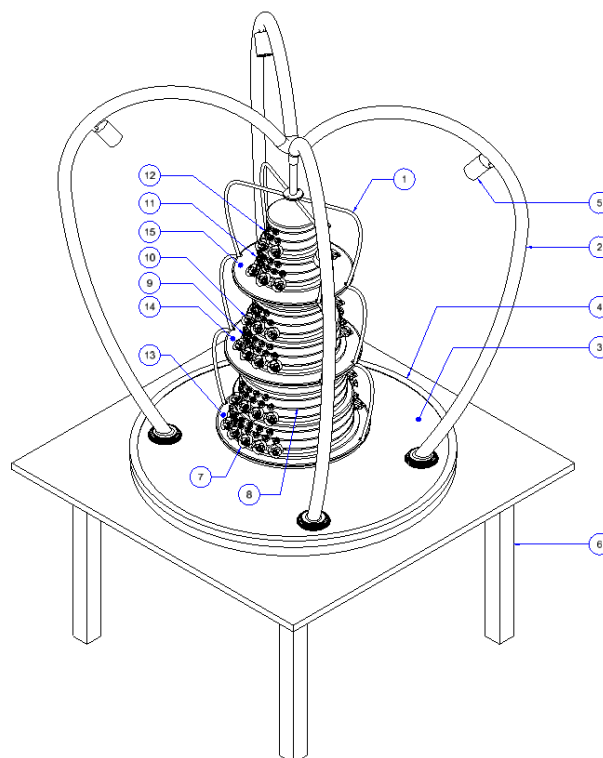
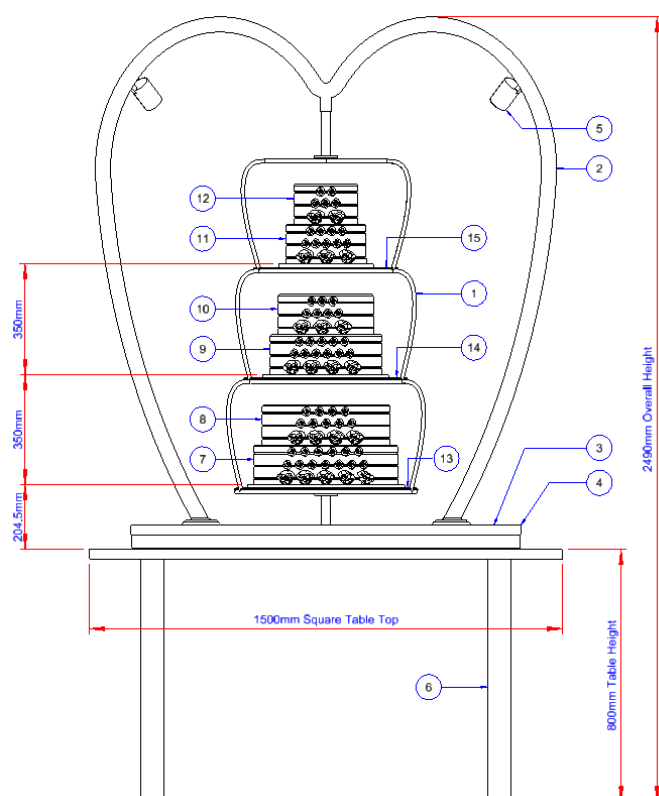


Top Tier Collection

Luxury Wedding Cake Display Stands
DATA SHEET WCS1082

6 Tier Display Style 1



Key

1. Wedding Cake Display Stand (Mirror Polished Stainless Steel)
2. Wedding Cake Display Stand Support Frame (Mirror Polished Stainless Steel)
3. Base Underlayer (see finish options)
4. Base Trim (Polished Brass)
5. LED Spot Lights x4
6. Cloth covered table
7. 18.0" diameter x 5.0" tall cake (recommended size serves 125 portions)
8. 16.0" diameter x 5.0" tall cake (recommended size serves 99 portions)
9. 14.0" diameter x 5.0" tall cake (recommended size serves 76 portions)
10. 12.0" diameter x 5.0" tall cake (recommended size serves 58 portions)
11. 10.0" diameter x 5.0" tall cake (recommended size serves 38 portions)
12. 8.0" diameter x 5.0" tall cake (recommended size serves 24 portions)
13. 23" diameter x 6mm thick bevelled glass cake support
14. 20.5" diameter x 6mm thick bevelled glass cake support
15. 18.0" diameter x 6mm thick bevelled glass cake support

Total of 420 portions

All portion sizes are based upon 1.0" x 2.0" slices

Top Tier Collection

Luxury Wedding Cake Display Stands DATA SHEET WCS1082

Wedding Cake Stand Base Underlayer Options

Quilted Bronze



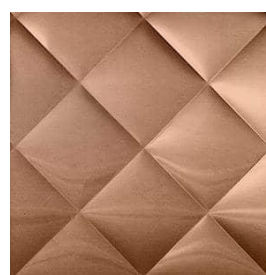
Quilted Champagne



Quilted Gold



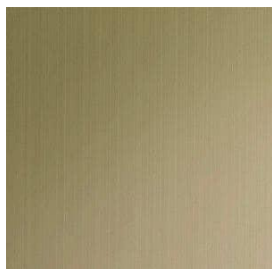
Quilted Rosy Gold



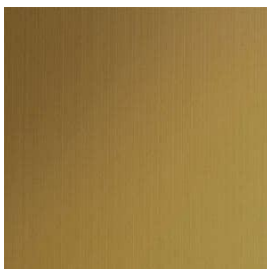
Plain Bronze



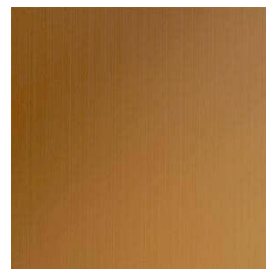
Plain Champagne



Plain Gold



Plain Rosy Gold



For technical reasons connected with media representations, the colours shown may not be exact matches of the finished product.

Top Tier Collection

Luxury Wedding Cake Display Stands
DATA SHEET WCS1082

LED Spotlights



- Dimmable GU10 LED bulbs
- 7W 550 Lumen Warm White Colour
- IP20 rated
- Beam Angle 38 Degrees
- Voltage 220-240V
- Stainless Steel housing
- Normal working temperature range -20 to 45 degrees C
- Remote Controller