

*Insignia Collection*

Luxury Glass Door Hinges  
DATA SHEET GG1123

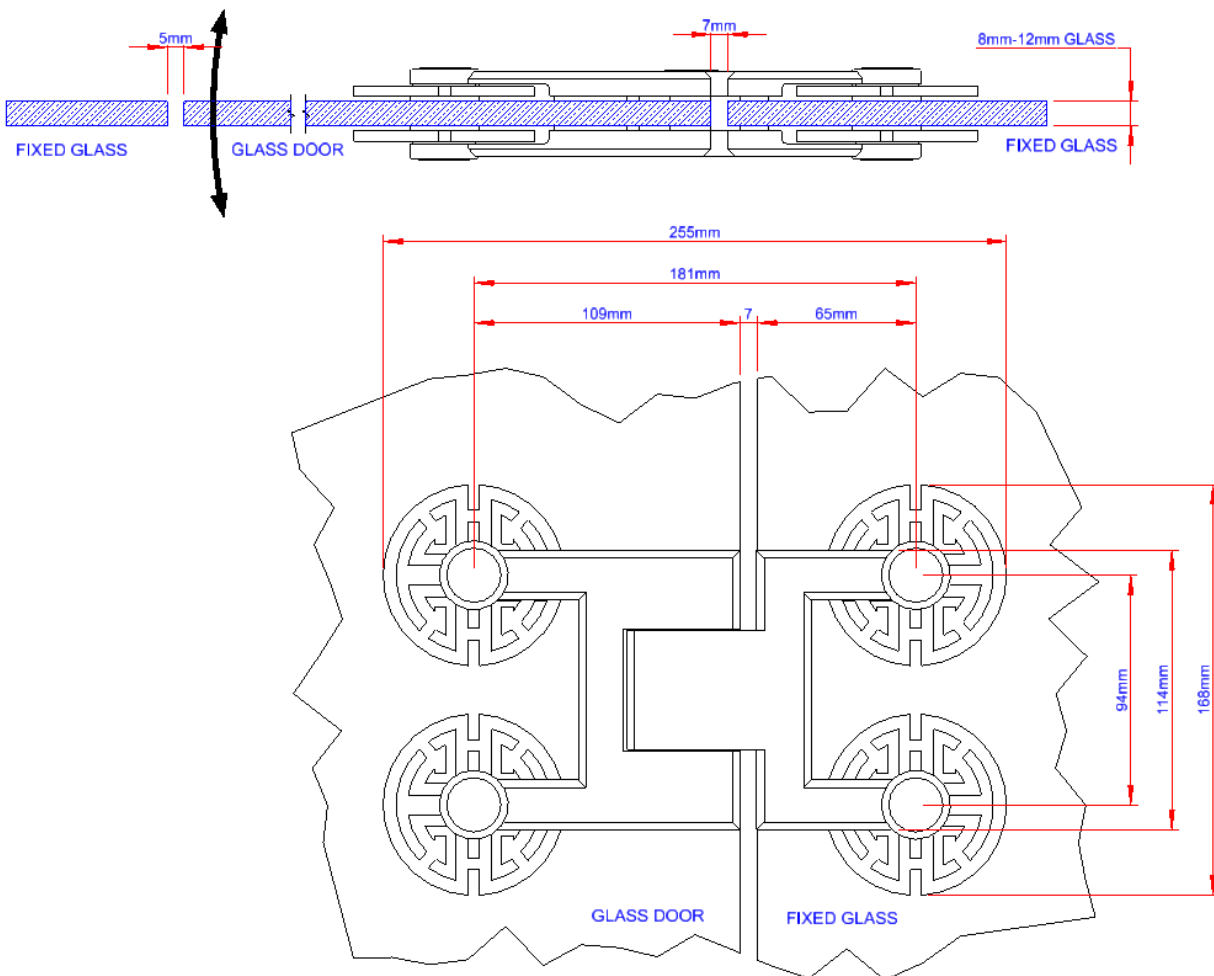
Glass Door Hinge In-Line Glass-to-Glass with Adjustable Closing  
Oriental#1, Wreath#1, Star#1 & Petal#3 Style Clamp Plates



Material : Stainless Steel AISI 304

Weight : 3.1 kg

Finish : See Finish Options



Insignia Collection

Luxury Glass Door Hinges  
DATA SHEET GG1123

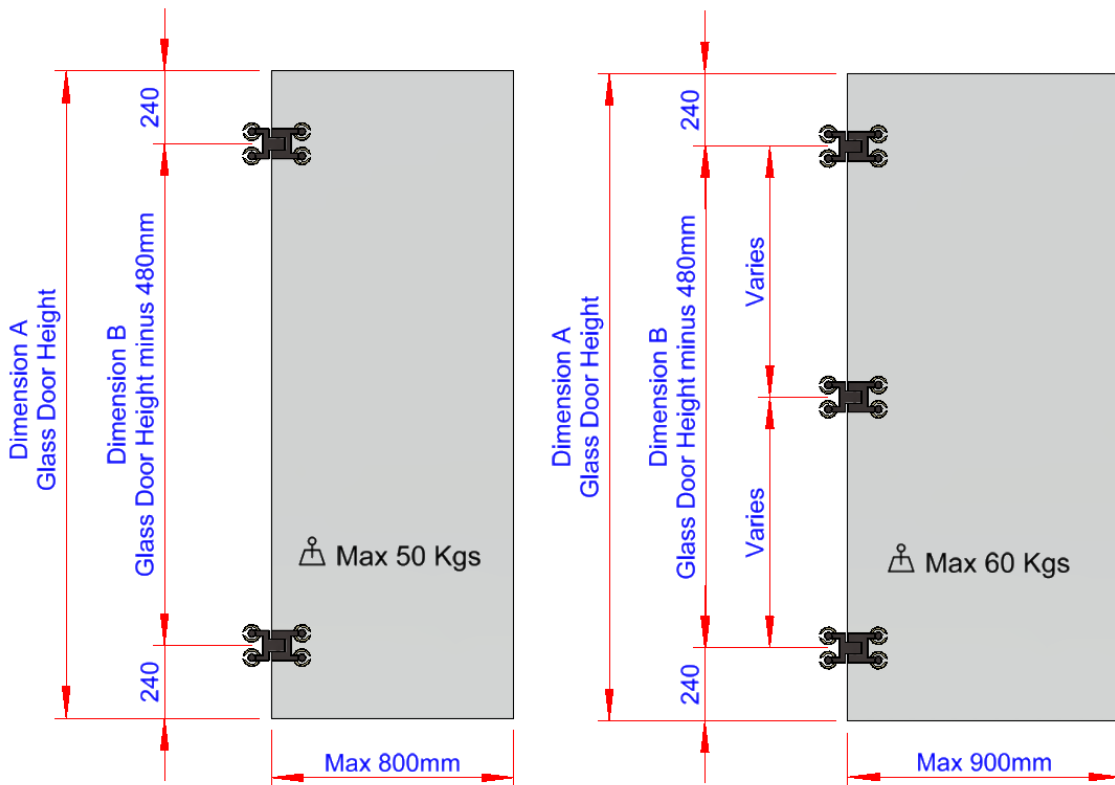
Glass Door Hinge In-Line Glass-to-Glass with Adjustable Closing  
Oriental#1, Wreath#1, Star#1 & Petal#3 Style Clamp Plates



Maximum Load Weights

Maximum Glass Door Widths

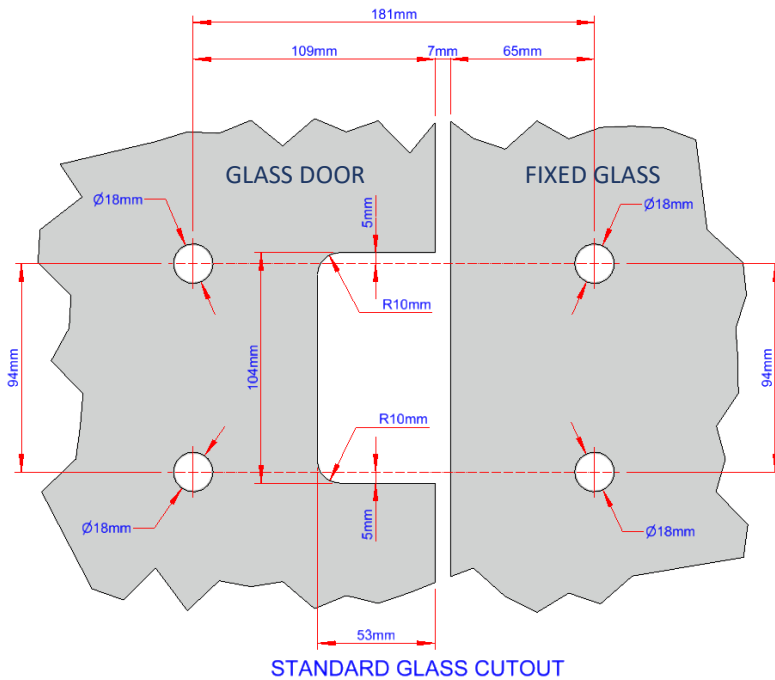
Recommended Hinge Spacing



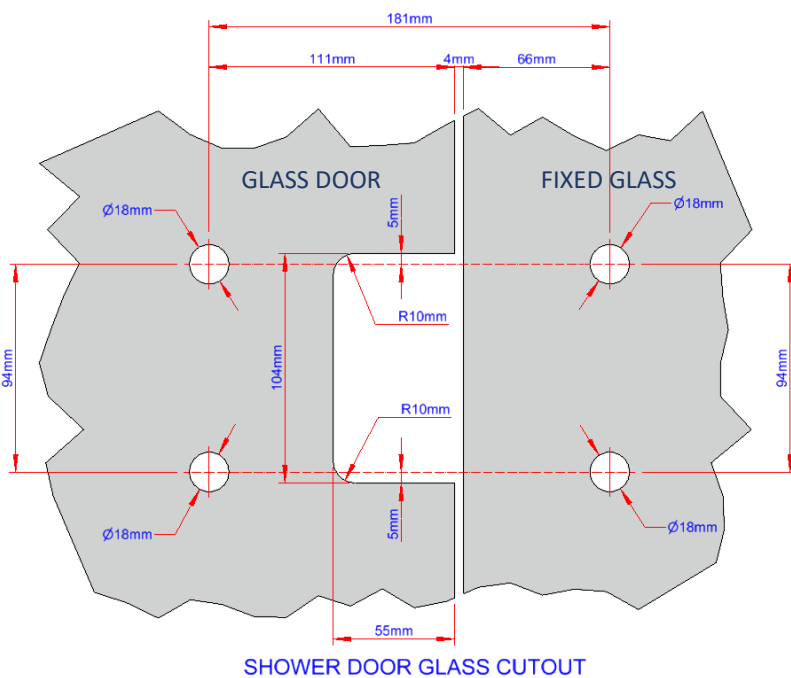
*Insignia Collection*

Luxury Glass Door Hinges  
DATA SHEET GG1123

## Glass Door Hinge In-Line Glass-to-Glass with Adjustable Closing Oriental#1, Wreath#1, Star#1 & Petal#3 Style Clamp Plates



STANDARD  
APPLICATION  
Glass-to-Glass Gap = 7mm

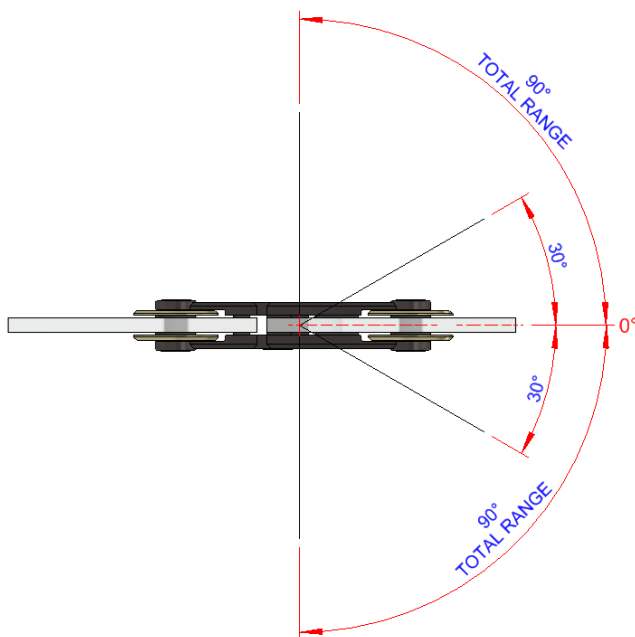


SHOWER DOOR  
APPLICATION  
Glass-to-Glass Gap = 4mm

*Insignia Collection*

Luxury Glass Door Hinges  
DATA SHEET GG1123

Glass Door Hinge In-Line Glass-to-Glass with Adjustable Closing  
Oriental#1, Wreath#1, Star#1 & Petal#3 Style Clamp Plates



Automatic closing action from 30°  
0° point closing adjustable

*Insignia Collection*

**Luxury Glass Door Hinges**  
**DATA SHEET GG1123**

**Glass Door Hinge In-Line Glass-to-Glass with Adjustable Closing**  
**Oriental#1, Wreath#1, Star#1 & Petal#3 Style Clamp Plates**

Oriental#1, Wreath#1, Star#1 & Petal#3 Clamp Plate Finish Options



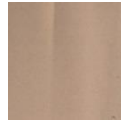
Polished Brass



Polished Nickel



Polished Light Brass



Polished Light Copper



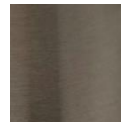
Polished Chrome



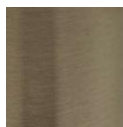
Polished Light Gold



Satin Brass



Satin Nickel



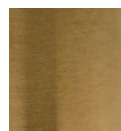
Satin Light Brass



Satin Light Copper



Satin Chrome



Satin Light Gold

Other Finishes available upon request

For technical reasons connected with media representations, the colours shown may not be exact matches of the finished product.

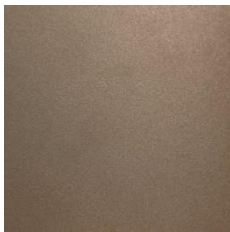
*Insignia Collection*

Luxury Glass Door Hinges  
DATA SHEET GG1123

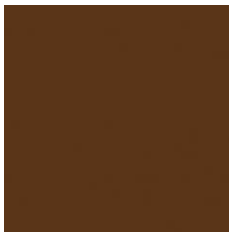
Glass Door Hinge In-Line Glass-to-Glass with Adjustable Closing  
Oriental#1, Wreath#1, Star#1 & Petal#3 Style Clamp Plates

Hinge Body Finish Options

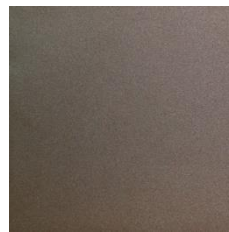
Metallic Coated Finish  
Aged Brass



Metallic Coated Finish  
Dark Brass



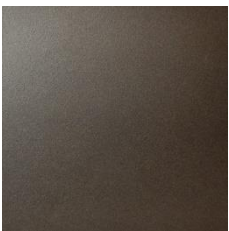
Metallic Coated Finish  
Bronze Bagana



Metallic Coated Finish  
Bronze Glencoe



Metallic Coated Finish  
Dark Bronze



Metallic Coated Finish  
Light Bronze



Other Finishes available upon request

For technical reasons connected with media representations, the colours shown may not be exact matches of the finished product.